



Hope

STARTS HERE.



the
Sharing
center

**Your Annual
Impact Report**
FYE 2025

Your Impact

Your generosity is the reason our neighbors have a place to turn when they face the weight of hunger, hardship, and homelessness. Because of you, every person who walks through our doors is met with compassion, dignity and the essential resources needed to reclaim their path to stability.



Mission Statement

Through Christ, we provide dignified solutions for those experiencing poverty and homelessness.

Our Core Values

Dignity | We honor the worth of every individual we serve and work alongside.

Faith | We believe in purpose-driven work and trust in a greater plan for transformation.

Compassion | We serve with empathy, responding to need with heart and humanity.

Integrity | We lead with honesty, accountability, and a commitment to do what is right.

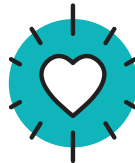
Impact | We are results-driven and relentlessly focused on making lives better.



12,305

unduplicated

INDIVIDUALS &
FAMILIES SERVED
ACROSS PROGRAMS



97,212

INDIVIDUAL
SERVICES
DELIVERED



\$5,808,693

VALUE OF NON-CASH
GOODS PROVIDED TO
CLIENTS





Table of Contents

04	Letter To Our Supporters
05	2024-25 Board of Directors
06	Family Support Program
08	The Oasis
11	The Pantry
14	ProjectRISE
17	Distribution Center and Retail Stores
20	Signature Events
22	Volunteer Highlights
25	Financials
26	Supporting Partners & Donors



To Our Supporters



A Message of Gratitude:

When a neighbor in crisis walks through our doors, they are often seeking more than a meal or hot shower. They are looking for a breakthrough. That singular moment where the heavy weight of “what now?” begins to lift, and a path toward stability finally comes into view.

Because of you, that moment of relief happened thousands of times last year.

Hope Starts Here is the promise we make to every person who seeks our help. But “here” is much more than a physical building. It is the collective heart of a community that stands together. It is your intentional generosity and belief that every person deserves dignity and a place to call home.

Last year, your partnership served as the bridge for 251 individuals and families, including 236 children, to move off the streets and into the safety of their own homes. For families in crisis, your support provided the vital assistance needed to prevent the trauma of eviction and interrupt the cycle of poverty.

Your belief in this mission also fueled ProjectRISE, equipping 86 job-seeking individuals with the critical tools needed to re-enter the workforce and increase their earning potential.

You helped sustain our retail stores, true engines of grace. Through your generous in-kind donations, we were able to distribute \$846,317 worth of household goods and clothing to families in need, while every retail purchase you made directly funded the programs that impacted the lives of over 12,300 individuals through over 97,200 services in Seminole County and beyond.

The milestones shared in these pages are a testament to what is possible when we lead with compassion. None of this happens without you. You are the heartbeat of this work, and you are the reason that, for so many, Hope Starts Here.

With deep appreciation,

A handwritten signature in black ink that reads "Tekoa Puerie".

A handwritten signature in black ink that reads "Michelle Smith".

Tekoa Puerie | President & CEO **Michelle Smith | Board Chairman**



2024-25 Board of Directors

Executive Committee

CHAIRMAN	Michelle Smith	Source 1
VICE-CHAIR EXTERNAL	Chip Colandreo	Lake Mary Life Publishing
VICE-CHAIR INTERNAL	Larry Bonner	Duke Energy Florida
TREASURER	Wendy Platon	WP Accounting Services, LLC
SECRETARY	Lee Johnson	AdventHealth

Board Members At Large

Chief Bryan Beyer	Seminole County Sheriff's Office
Nisha Brice	Florida Blue
Howard Britt	Premier Show Group
Brendan Burke	BCG Private Wealth Management
Marsha Burns	Community Volunteer
Ryan Cipparone	Cipparone & Cipparone, PA
Dr. Anita Ekambaram	Orlando Health
Ajeem Evans	JP Morgan Chase
Doug Foreman	Fringe Benefit Plans, Inc.
JD Gierach	Markham Woods Presbyterian Church
Michael Heald	Purvis, Gray & Company, LLP
Vikki Hodgkins	Celebration Restaurant Group
Basim Kharttabli	Seminol State College of Florida
Gloryvel Morales	Trustco Bank
Marilyn Moran	FordHarrison, LLP
Robin Rosado	Before the Links
Mary Sherris	Sherris Legal, PA
Cedrick Williams	Magnus Realty Group
Jeffery Williams	Warton-Smith, Inc.
Christian Wurtz	Wurtz Construction



Family Support Program



Through the Family Support Program, you provide the urgent intervention a family needs to stay housed and keep food on their table. Beyond rent and utility assistance, your support addresses the root causes of instability by offering case management, budgeting, mental health counseling, employment referrals, and more.



9,775
unduplicated
INDIVIDUALS &
FAMILIES SERVED



21,760
NUMBER OF
SERVICES
DELIVERED



\$361,186
FINANCIAL
ASSISTANCE
PROVIDED



Family Support Program



A Bridge to Stability | Richard and Cheryl's Story

When Richard was unexpectedly terminated from his position at a local hospital, his household's stability began to crumble. Despite his experience, Richard's job search was complicated by age-related barriers, and the financial gap widened quickly.

By the time they reached out for help, the couple was \$1,819 behind on rent and facing the very real threat of eviction. For Richard's wife, Cheryl, the situation was particularly traumatic; having experienced homelessness in the past, the fear of living in their car again was overwhelming.



“When all is lost, it is so hard to imagine things getting better. I will do anything... to give hope to those who are convinced all is lost forever.”



The Family Support Program was able to provide the critical intervention needed to stop this cycle of crisis. By covering their outstanding balance, your support didn't just prevent an eviction; it provided the emotional and financial breathing room Richard needed to secure a new position.

That “breathing room” led to a total transformation.

Richard is now employed full-time with a physical therapy company, earning a living wage and bringing stability to the home.

Through the generosity of our donors, Richard and Cheryl have moved from the brink of homelessness to complete independence.



The Oasis



As the only daytime drop-in center in Seminole County, The Oasis offers a dignified space for neighbors experiencing homelessness. Because of your generosity, individuals have access to case management, mental health counseling, hot showers, laundry services, haircuts, nutritious meals and even a mailing address. These essentials build trust and help clients move from crisis into safe, stable housing.

Annual Impact Report FYE 2025



1,169
unduplicated
INDIVIDUALS SERVED



61,775
NUMBER OF
SERVICES
PROVIDED



251
including 236 children
INDIVIDUALS &
FAMILIES HOUSED



The Oasis



A Journey to Healing | Charmaine's Story

When Charmaine first walked through the doors of The Sharing Center, she was navigating the difficult road of recovery while experiencing homelessness in an unfamiliar place. "I was lost. Not hopeless, but lost," she remembers. She didn't know where to turn for help, but because of your support, she found a community that refused to give up on her. Through your generosity, Charmaine found The Oasis, a place for a hot shower, clean laundry, and a nutritious meal. But more than that, she found people who saw her potential.

"They say they're proud of me a lot. I'm not used to that, but it works." That consistent encouragement helped Charmaine start to believe in herself again. Your gifts provided her with weekly therapy sessions to rebuild her self-esteem and stay on track with her health. For the first time, the shame she once carried lifted. "The shame kind of goes away," she said. This sense of belonging culminated in a moment that brought her to tears during a holiday celebration. "They were running around being all nice and jovial, and I just started crying." Because of you, kindness and community are no longer "new" to her. They are her foundation.

Charmaine is open about where she might have been without this support. "If it weren't for The Sharing Center, I'd probably still be using," she said. "I was a hot mess when I first came, and they know it. But now they're proud of me. I like who I am sober and so do they."

Charmaine is now over a year sober and proud to be home in her very own apartment.





"I was lost.

Not Hopeless...
but lost"

The Pantry



When a neighbor visits The Pantry, your kindness provides more than just a meal. It provides nourishment every family deserves to stay healthy and strong. Because of your investment, a mother can bring home groceries filled with the nutrients her children need to grow and thrive. You are ensuring that through our Longwood hub and community network, a healthy table is always within reach for our neighbors as they work toward stability.

Annual Impact Report FYE 2025



852,094
MEALS PROVIDED



\$4,435,997
VALUE OF FOOD DISTRIBUTED



\$302,794
VALUE OF NON-FOOD ITEMS SHARED



The Pantry



From Hesitation to Hope | Verda's Story

Verda spent her life as a community servant and ministry leader, always the one caring for others. But when a storm severely damaged her 50-year-old home, she faced an impossible choice. "I went into serious debt just to get that house back to code," she shared. "So I cut my food budget right down the middle. I had to."

Verda was skeptical about seeking help, worried about the lack of dignity she had seen elsewhere. But because of your support, the moment she walked through our doors, she felt something different.

"You don't lose your dignity or your integrity here," she said. "It's not a handout; it's a hand up." Through your generosity, Verda found a pantry stocked with items that made her feel seen and respected. "They gave me things I would actually buy. It was like they peeked at my shopping list," she laughed. From fresh salads to quality meats, your gifts ensured she never had to sacrifice her health because of her situation. Beyond the pantry, your support of our retail stores helped Verda's family stretch their dollars even further. As she helped her daughter raise her grandsons, your donations meant she could buy four or five pairs of jeans for the cost of one at the mall. "You can get your kids what they need and still have money left for necessities. You offer love and assistance without pity."

Verda knew that for many neighbors, the fear of being "treated badly" is what keeps them from asking for help. But because of your compassion, Verda walked away with her head held high. "At The Sharing Center, you never feel less than human. That's what makes it special, the heart of the people."

Today, Verda is back to doing what she loves: serving her family and her community, bolstered by the blessing of your support.





*“ You never feel less than human here.
that’s what makes it special,
The heart of the people”*

ProjectRISE

When a student enters ProjectRISE, they aren't just looking for a job; they are looking to reclaim their confidence and their future. Because of you, they receive the professional coaching and emotional tools needed to transform a season of unemployment or under-employment into a lifetime of

self-sufficiency. You are the reason our students can walk into an interview with confidence, secure meaningful employment, and provide a more stable life for their family.

RISE



Annual Impact Report FYE 2025



86

TOTAL GRADUATES



81%

GRADUATION RATE



ProjectRISE



Owning the Path Forward | Nedd's Story

At his ProjectRISE graduation, Nedd stood before his peers, mentors, and supporters to share a journey once defined by “one-way roads leading to all the wrong places.”



*“My success—I own it,” he began.
“But it wasn’t always like this.”*

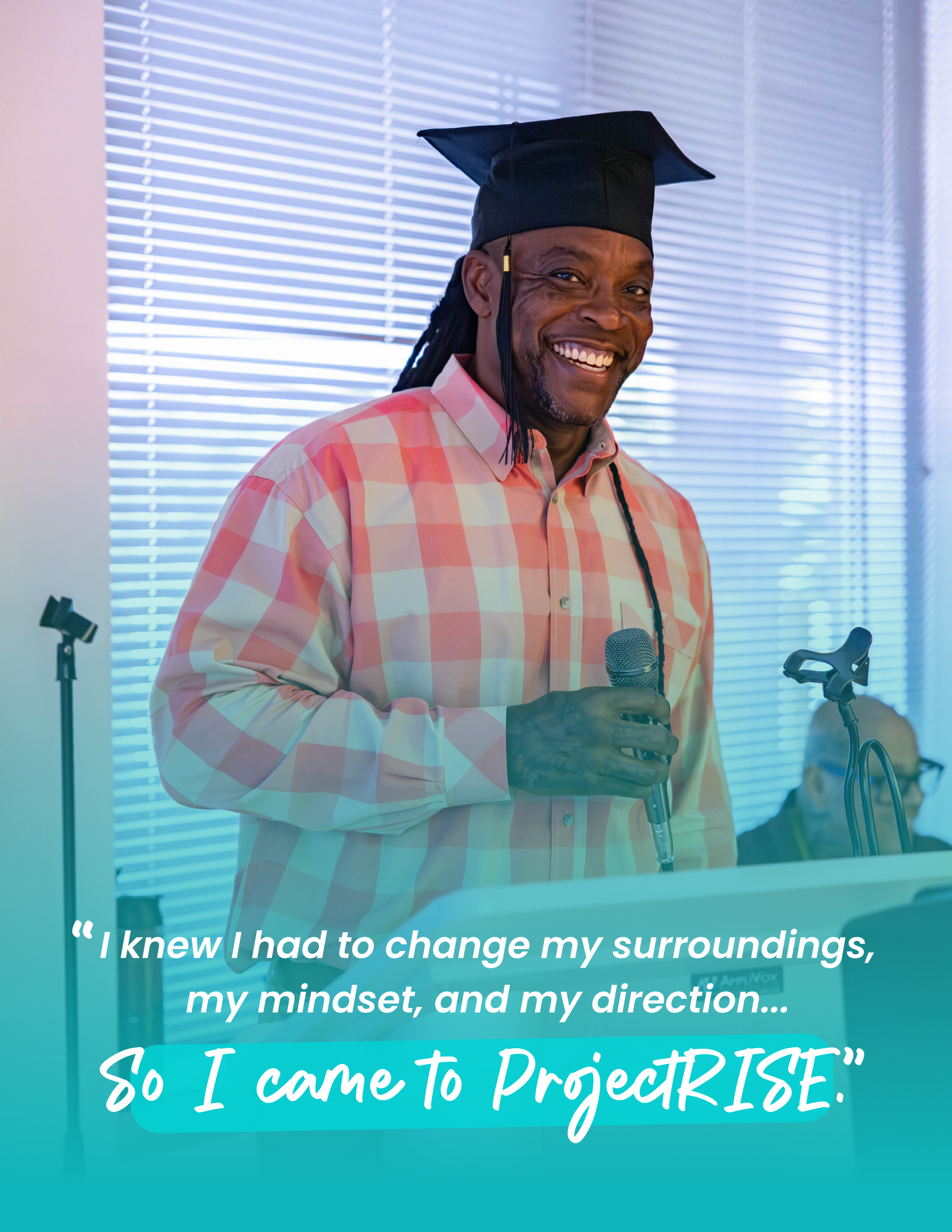


Nedd’s path included a long 15-year journey in prison. After his release, life hit him hard: he lost his sister, and then four years later, his father. Those two losses crushed him mentally, emotionally, and physically.

In that pain, Nedd realized he had a choice: give up or get up. He chose to rise. Because of your partnership, Nedd found the structured environment he needed to start over. He learned he needed more than just a professional wardrobe to succeed; he learned how to manage his emotions, face his fears, and step out of his comfort zone with purpose. While he mastered the essentials of building a resume and presenting the best version of himself, the true transformation was internal. Through your support, Nedd was given the tools to break repeating patterns and finally stay on a path that leads forward. Today, Nedd stands tall in his new identity.

“I stand here not as who I was, but as who I’ve become. This is not the end; it’s just the beginning. From here on out, I own my success.”



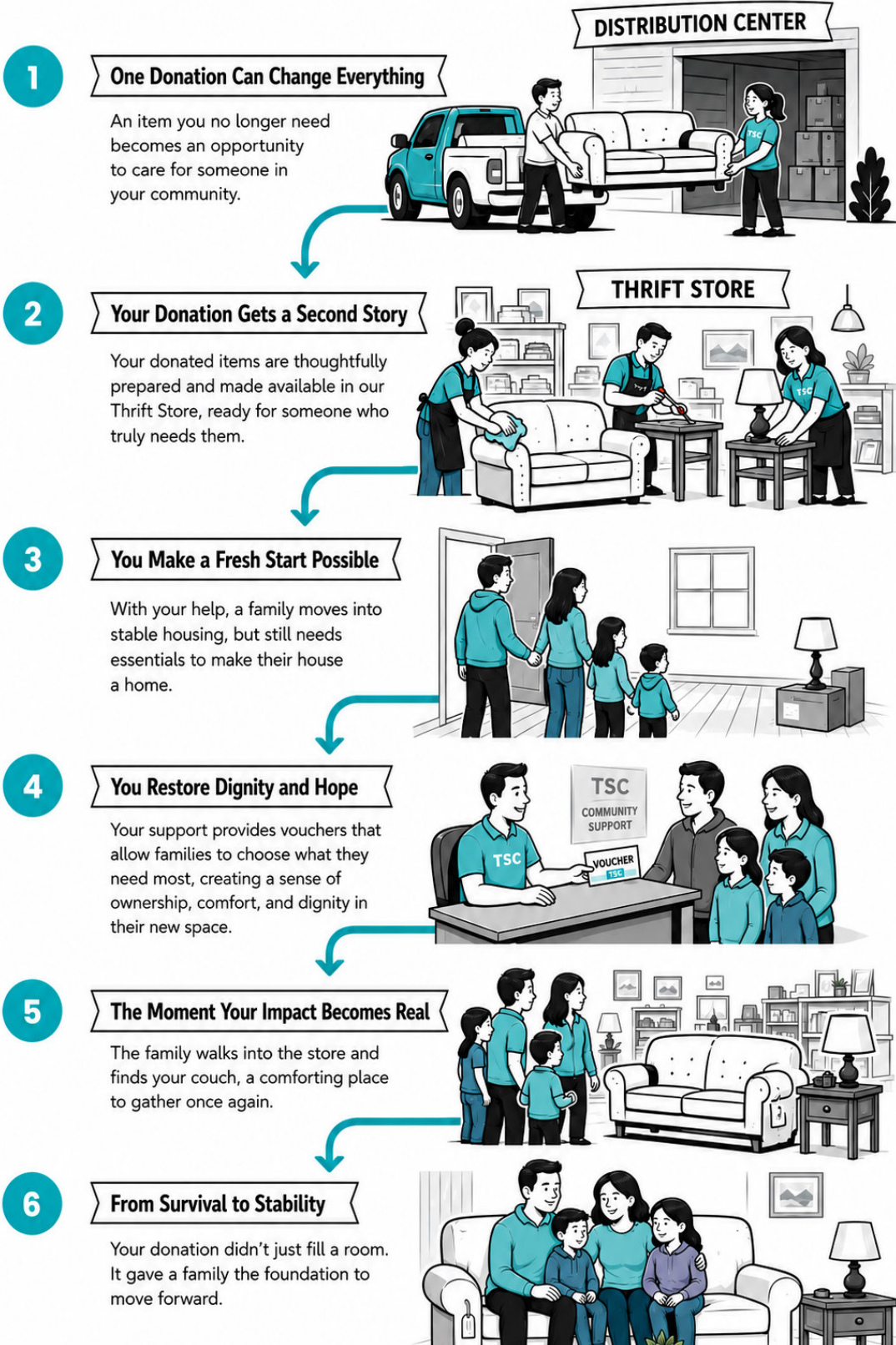


*“I knew I had to change my surroundings,
my mindset, and my direction...*

So I came to ProjectRISE.”

Distribution Center and Retail Stores

What begins with your generosity becomes a pivotal moment for a neighbor in need.



Distribution Center

The Distribution Center is the central hub where your donations of clothing and household goods are set into motion. Powered by dedicated volunteers, your gifts are meticulously processed for their highest and best use. While some items sustain our Thrift Stores, your generosity ensures we can prioritize the immediate needs of neighbors in crisis. By sharing what you have, you ensure every family who turns to us receives what they need with the dignity they deserve.

RECEIVED AND
PROCESSED OVER
26,105
in-kind donations

TRANSFORMED
SALVAGED ITEMS INTO
\$68,460
of vital funding for
essential services.

DISTRIBUTED OVER
\$846,317
of household goods and
clothing to neighbors in need



Retail Stores

Through our Boutique, Furniture and Thrift stores, your donated items make double the impact. Your generosity makes it possible for families in crisis to shop for essentials at no cost through a private, confidential process that protects their dignity. At the same time, every purchase made by the community generates funds that go back into our vital programs.

You ensure that every neighbor has access to quality items and that a simple bag of clothes becomes a powerful resource for those in need.

\$1,358,169

in sustainable revenue to
support the men, women
and children we serve



Signature Events

Good Samaritan Luncheon

Total Raised:

\$94,641

On March 28, 2025, over 300 supporters gathered at the Sheraton Orlando North for the annual Good Samaritan Luncheon. This event served as a heart-centered reminder of the critical needs within our community and the transformative power of your support.

A highlight of the afternoon was the presentation of the Paul Hoyer Legacy Award to long-time supporter Don Blackadar, honoring his enduring commitment and service that mirrors the spirit of beloved Pastor Paul Hoyer. Nearly \$95,000 was raised to move clients from crisis to stability.

Share the Light Gala

Total Raised:

\$345,045

On August 16, 2025, our community gathered for the Venetian masquerade-themed Share the Light Gala, an evening dedicated to unity and dignity. The masquerade served as a powerful symbol: that when we come together for a shared purpose, barriers fall away and we see one another simply as neighbors.

Because of your extraordinary generosity, the evening raised \$345,045 to ensure that for every neighbor facing hardship, there is a pathway forward filled with hope.



Signature Events



Volunteers Power Our Mission



TOTAL VOLUNTEERS	•	TOTAL VALUE OF SERVICE	•	TOTAL VOLUNTEER HOURS
3,033	•	\$1,997,514	•	60,531



Annual Impact Report FYE 2025





.....

"As each has received a gift, use it to serve one another"

..... **1 Peter 4:10**



Annual Impact Report FYE 2025



Volunteer Spotlight

From Crisis to Connection | Mary's Story



Originally from Uganda and a resident of the U.S. for over 40 years, Mary faced a series of life-altering misfortunes several years ago that left her seeking refuge at a local shelter. It was there she met Patricia, and together, they turned to The Sharing Center for a way forward.

The path wasn't easy. The two women traveled two hours by bus each week to access groceries and clothing, carrying only what they could hold in their arms. Yet, through that journey, they found their foundation.

Your generosity helped them secure a stable home, and Patricia successfully completed ProjectRISE, eventually landing a job that signaled the start of their new life.

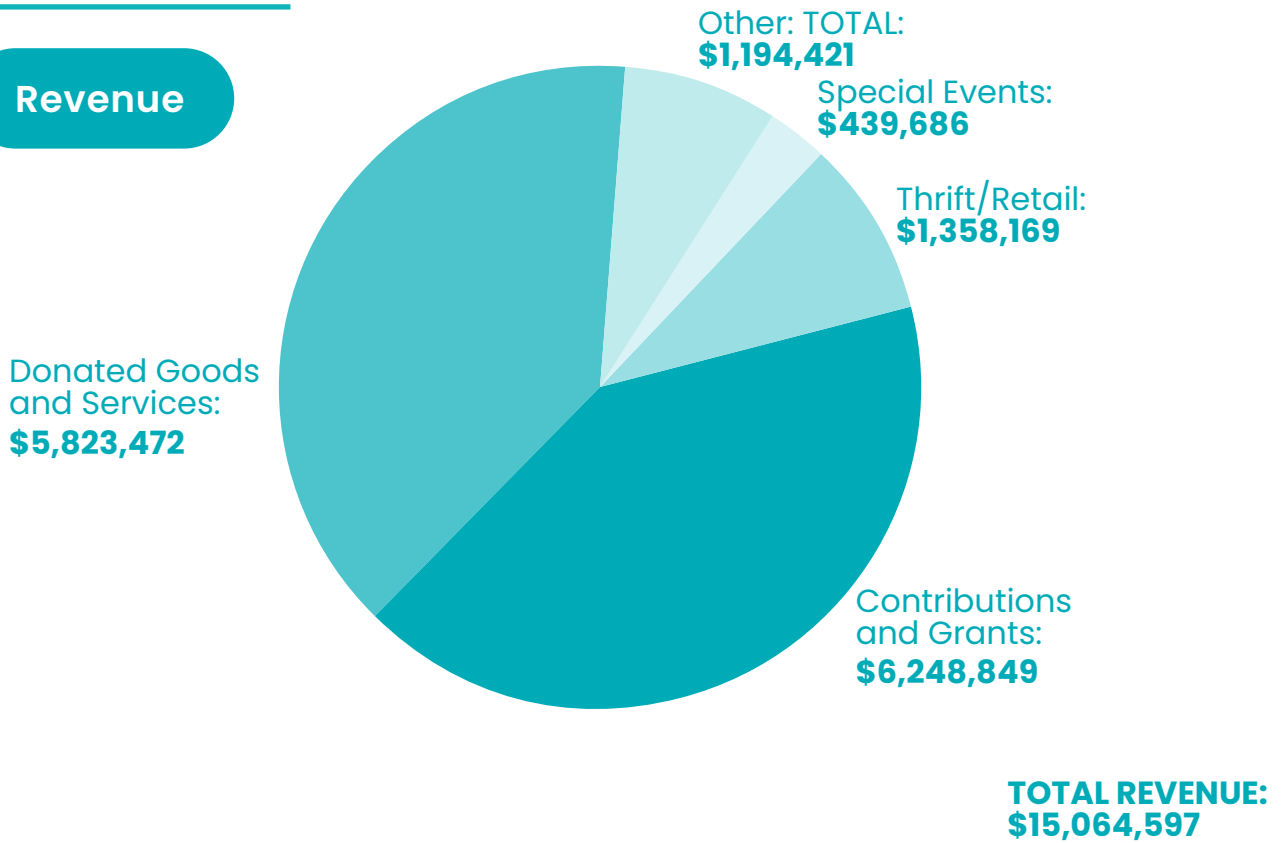
Deeply moved by the support she received, Mary chose to give back. What began as a way to say "thank you" has grown into a devotion to volunteer service. Today, Mary is a constant presence at our Distribution Center, The Pantry, and our monthly food drops. Her personal experience fuels her tireless desire to help others, a commitment that earned her our All-Around Volunteer Award in 2025.

Mary's story is a reminder that when you provide a neighbor with a bridge to stability, they can turn around and help build that same bridge for someone else.

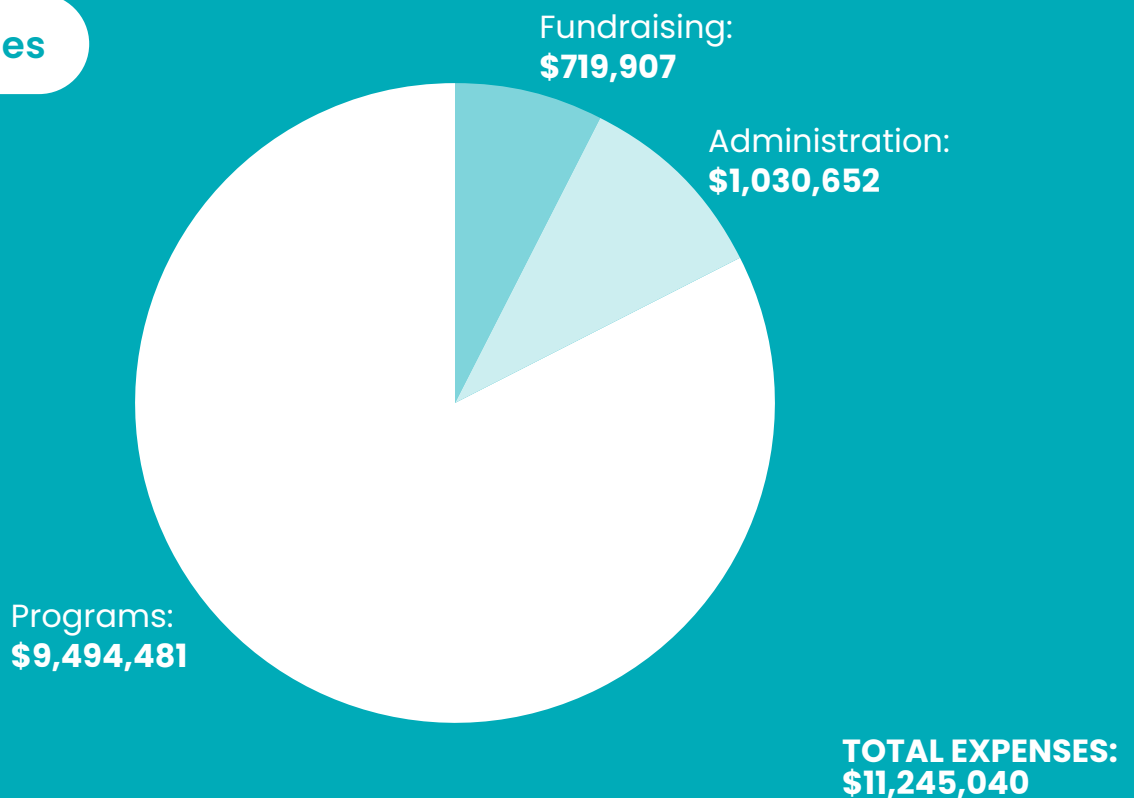


Financials

Revenue



Expenses



Supporting Partners | Share the Light Gala Sponsors

Presenting Sponsor



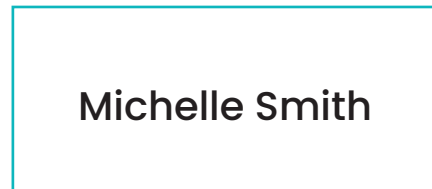
VIP Cocktail Hour Sponsor



Mission Moment Sponsor



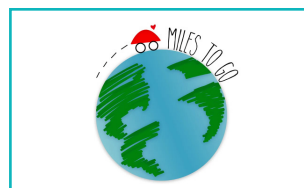
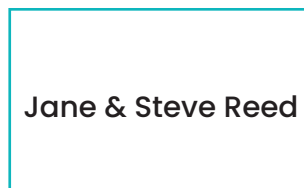
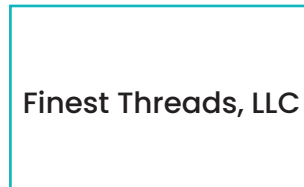
Parking Sponsor



Benefactor Sponsors



Patron Sponsors



Dignity Sponsors

Duke Energy
Fairwinds Credit Union
Foundation for Seminole State College
KEM Business Solutions
Purvis, Gray & Company, LLC
Mary Sherris and Marilyn Moran
Oviedo City Church

Seminole County Sheriff's Office Community Foundation
JST Power Equipment
Joanne Schwarzmann and Robert Turnage
Sinns & Thomas Electrical Contractors, Inc.
Orlando Sanford International Airport
United Clothing Donation Services, Inc.



Supporting Partners

\$100,000+

AdventHealth Orlando
Bank of America Charitable Foundation
Ken and Mary Pat Burke Charitable Fund
Second Harvest Food Bank of Central Florida
Seminole County Board of Commissioners/Community Service Department
Siemer Institute
TD Charitable Foundation
The Good Family Charitable Fund

\$99,999–\$25,000

- Annunciation Catholic Church
- BCG Private Wealth Management
- Heart of Florida United Way, Inc.
- Maxwell Thomas Bras Foundation
- Truist Foundation
- Wharton-Smith, Inc.
- Whole Family Healthcare

\$24,999–\$10,000

- A.T.A.P. COMPANIES
- Addition Financial Credit Union
- Big Nova Foundation
- The Burke Family Fund
- Chesley Magruder Foundation, Inc.
- Deloitte Services, LLP
- Glenda G. Morgan Charitable Foundation
- J. Raymond Construction Corp.
- Journey for Good Foundation (Formerly HMS Host)
- Light Orlando (Powered by Acahand Foundation)
- Orlando Health
- Southeastern Grocers
- SouthState Bank
- Three Sixteen Kegler Fund
- Waste Connections of Florida
- Westgate Foundation
- Willow Creek Church PCA, Inc.

We are honored to recognize our generous supporters who made gifts between October 1, 2024 and September 30, 2025. We apologize for any errors or omissions. Please contact development@thesharingcenter.org and we will be happy to make any corrections.



Supporting Partners

\$9,999-\$1,000

- A. Duda & Sons, Inc.
- Annunciation Catholic Church-All Saints Circle-Council of Catholic Women
- Antioch Missionary Baptist Church
- Avatar Non-Profit, Inc.
- Beyer and Brown, Inc.
- Blackadar Insurance Agency, Inc.
- Blount Charitable Fund
- Brookfield Properties
- Carolyn Euliano Family Trust
- Celebration Restaurant Group/CFL Pizza, Inc.
- Central Florida Infectious Disease Specialists, Inc.
- Christ Church, Inc.
- Christian Principles Restored Ministries
- City Church FL
- Club Venture
- Community Foundation Tampa Bay, Inc.
- Delane and Robert Buck Family Foundation
- Design-Build Institute of America Florida Region
- DoorDash, Inc.
- Duke Energy
- Easy Sell Florida
- Fairwinds Credit Union
- Finest Threads, LLC
- Florida Blue Foundation
- Fringe Benefits Plan
- Foundation for Seminole State College

We are honored to recognize our generous supporters who made gifts between October 1, 2024 and September 30, 2025. We apologize for any errors or omissions. Please contact development@thesharingcenter.org and we will be happy to make any corrections.



Supporting Partners

\$9,999-\$1,000

- Gierach Family Foundation, Inc.
- Global KTech, Inc.
- Guignard Company
- Holy Cross Lutheran Church of Lake Mary
- Joseph G. Markoly Foundation, Inc.
- JST Power Equipment
- KEM Business Solutions
- King's Chapel of Central Florida, Inc.
- Law Office of Cynthia E. McGee, P.A.
- Luke 12:48 Foundation
- Macauley and Helen Dow Whiting Foundation
- Maitland Presbyterian Church
- Markham Woods Presbyterian Church
- Markham Woods Seventh-Day Adventist Church
- Massey Services, Inc.
- New Covenant Anglican Church
- Orlando Sanford International Airport
- Outpouring Orlando
- Oviedo City Church
- Publix Super Markets Charities
- Purvis, Gray & Company, LLC
- Race Time Sports
- River Oaks Presbyterian Church
- Rotary Club of Maitland
- Rotary Club of Sanford
- Saint Andrew's Chapel

We are honored to recognize our generous supporters who made gifts between October 1, 2024 and September 30, 2025. We apologize for any errors or omissions. Please contact development@thesharingcenter.org and we will be happy to make any corrections.



Supporting Partners

\$9,999–\$1,000

- Duke Energy
- Seminole County Sheriff's Office Community Foundation
- Sinns & Thomas Electrical Contractors, Inc.
- St. Stephen Lutheran Church
- Starlight Baptist Church
- The Iserv Company
- The Collage Companies
- The House of Tannler Charitable Gift Fund
- The J. Milton Hoffa and Nellie E. Hoffa Memorial Foundation
- The Masters Academy of Central Florida, Inc.
- The Parker Hannfinn Foundation
- Thrivent Choice
- Tom and Lynn Hastings Giving Fund
- Trustco Bank
- United Clothing Donation Services, Inc.
- VyStar Credit Union
- Wawa Foundation
- Wells Family Charitable Foundation
- Woman's Club of Winter Park, Inc.
- WP Accounting Services

We are honored to recognize our generous supporters who made gifts between October 1, 2024 and September 30, 2025. We apologize for any errors or omissions. Please contact development@thesharingcenter.org and we will be happy to make any corrections.



Annual Donors

\$25,000+

- Anonymous
- Ultima and John Morgan
- Ann Carr
- Anonymous

\$24,999-\$10,000

- Mia and Toby Ayers
- Anne and Donald Blackadar
- Keleigh and R.J. Brouwer
- Linda and Brian Cox
- Steven D'Antonio
- Rachael and Cameron Hamel
- Duane Kuck
- Robin and Mark Ogier
- Katherine and Raymond Scott
- Michelle Smith
- Terry Weis
- Carole Williams
- Cynthia and Clark Ziegler

\$9,999-\$5,000

- Gail and Michael Bittman
- Wendy and Charles Brandon
- Charlotte and Howard Britt
- Amanda and Garrett Burke
- Victoria and Brendan Burke
- Paula and Ron Davoli
- Stan Smith and Patricia Donohue
- Debra Drebert Tolleson
- Doug Foreman
- Gloria Hoffmann
- Vikki Hodgkins
- Jean and Richard Horbert
- Lee Johnson
- Leigh and Roger Kennedy
- Holly and JR Kroll
- Sharron and Charles Nelson
- Danielle and Chad Newbold
- Hai Nguyen and James Hall
- Sandy and Alexander Nicholas
- Carol and Christopher Ranck
- Jane and Steve Reed
- Peggy Robison
- Charles Scherman
- Mary and William Smith
- Rebecca and Andrew Taylor
- Joanne Schwarzmann and Robert Turnage
- Dianne and Brian Walsh
- Mary and Brad Weston
- Ola Williams

We are honored to recognize our generous supporters who made gifts between October 1, 2024 and September 30, 2025. We apologize for any errors or omissions. Please contact development@thesharingcenter.org and we will be happy to make any corrections.



Annual Donors

\$4,999–\$1,000

- Maria and John Adornetto
- Michael and Donna Alderson
- Patty Alexander
- Mary and Jim Allen
- Sheila Amini-Ekbatani and Alex Ekbatani
- Danielle and Erik Anderson
- Michelle Mosley and Billy Armstrong
- Mary and Allen Arseneau
- Priscilla and Hugo Azzolini
- Scott Banta
- Steve Berghane
- Kelsey and Brett Blackadar
- Gail Boardway
- Santa and Norton Bonaparte
- Alvin Darwin Boothe
- Vi and Matthew Borchelt
- Vicki Brian
- Kris Buchanan
- Carol Bunker
- Judith Burke
- Marsha and Tim Burns
- Patricia and Aaron Bythwood
- John M. Campbell
- Linda and Damian Carlson
- Donna and Robert Castaldi
- Peter Chen
- Gloria Chu
- Erica and Ryan Cipparone
- Alice–Ann Cook
- Gene Cristan
- Katherine Crnkovich
- Tara and Wayne Culver
- Sharon and Raymond Davis
- Ralph Drtina
- Patricia Eckstein
- Anita Ekambaram and Kannan Srinivasan
- Carolyn Euliano
- Ajeem Evans
- Tanya Fernandez
- Jean and Richard Florell
- Roberto Fonseca
- Destiny and Jorge Friguls
- Tommie and Gary Garmon
- Catherine and Donald Gergick
- Gabriela and JD Gierach
- Susan and David Gordon
- Judith and Errol Greene
- James and Diana Grisham
- Susan Groover
- Margaret Grupp
- Parker Hannifin

We are honored to recognize our generous supporters who made gifts between October 1, 2024 and September 30, 2025. We apologize for any errors or omissions. Please contact development@thesharingcenter.org and we will be happy to make any corrections.



Annual Donors

\$4,999–\$1,000

- Lynn and Thomas Hastings
- Debbie and Michael Heald
- Yanet Herrero
- Douglas Jamison
- Lynda and Darrell Jobman
- Anne and Walt Juergensen
- Mark Kapatoes
- Kathryn and Gerald Keane
- Anne Kelley
- Basim Khartabil
- Ann Klega
- Kathy Krasnoff
- Debra and Thomas Kunovic
- Ross Lankenau
- Cynthia and Dennis Leavy
- Jacqueline and Salvador Leccese
- Noah Lovvorn
- Kathleen Lukas
- Christine and Richard Lupi
- Alinda and Rick Marciano
- Nicole and Frank Martz
- Barbara and Bruce May
- David McCarron
- Jeremy McCauley
- Laurie and David Mealor
- Lynn and Jose Mederos
- Kathy and Matthew Merwin
- Jane Miller
- Gail and Ralph Miller
- William Miller
- Sally Milton
- Barbara Moehring
- Marilyn Moran and Michael Weaver
- Heather and Justin Mount
- Kristine and Cedric Nakamura
- Sonia Nebel
- Kristi and Andrew Nowrouzi
- Jennifer and James Nunn
- Gail and Roger O'Connor
- Robin and Mark Ogier
- Michael and Deborah Owen
- Stephen Parks
- Linda Peattie
- Pauline and Christian Pedersen
- Dolores and Basil Pflumm
- Dorene Pfeifer
- Mia and William Poinsette
- Amy and Dan Polfer
- Helen Kimberly Pope
- Mary and Victor Poteat
- Tekoa and Dio Pouverie
- Janice and Gary Price
- Carla and Michael Prusak
- Evelyn Quinones

We are honored to recognize our generous supporters who made gifts between October 1, 2024 and September 30, 2025. We apologize for any errors or omissions. Please contact development@thesharingcenter.org and we will be happy to make any corrections.



Annual Donors

\$4,999–\$1,000

- Lisa and John Rankin
- Nicole and James Rawlins
- Estate of William R. Renuart
- Andrea and Daniel Reichard
- Claire and William Reisenweaver
- Laurent Renaud
- Karen and William Renuart
- Jay and Carole Rohr
- Kimber and Antione Saint-Preux
- Kelly Savage
- Claire and Harold Schmidt
- Danielle and Mike Seiple
- Cesar Silva
- Megan Sladek
- Arianne Speth
- Rose and Stephen Stankiewicz
- Denise Stanley
- Steve Strang
- Barbara Straw
- Joyce and Jim Sutton
- Ben Teah
- Boyce Thompson
- Amy and Michael Tindel
- Peter Travers
- Joseph V. Trepani
- Donna Van Allen
- Vicky and Mark VanGorder
- Jeff Villanueva
- Kimberly Walker
- Shelley West
- Karyn and Don Wilczynski
- Cedrick Williams
- Kavian Williams
- Shaunalee Williams
- Kate Wilson
- Susan and Rick Wollner
- Lois and Harold Womersley
- Melodi and Jon Wood
- Mellissa and Hew Woodward
- Lindsay and Christian Wurtz
- Mary Ann Yaun
- Arlene Yong and Anthony Fedullo
- Marcin Zelek
- Lisa and Jay Zembower

We are honored to recognize our generous supporters who made gifts between October 1, 2024 and September 30, 2025. We apologize for any errors or omissions. Please contact development@thesharingcenter.org and we will be happy to make any corrections.





the **Sharing** center

Serving Through Faith & Compassion

The Sharing Center

Live United Village

600 N. Highway 17-92, Suite 130

Longwood, FL 32750

Phone

815.658.9015

Fax

813.400.3800

Website

www.thesharingcenter.org



Heart of Florida
UNITED WAY

Platinum
Transparency
2025

Candid.



**CHARITY
NAVIGATOR**

★★★★
Four Star Charity